



Worship Ministry Manual

Contents

1.	Ministry Philosophy.....	3
2.	Why “Ascend”?.....	4
3.	Teams	5
4.	Pathway to Worship Ministry Involvement	6
5.	General Expectations.....	7
6.	Worship Ministry Organizational Chart.....	8
7.	Job Descriptions.....	9
	a. Sound Technician.....	10
	b. Computer/Lighting Technician.....	11
	c. Camera Technician	12
	d. Chorale Singer.....	13
	e. Worship Team Singer	14
	f. Special Musician.....	15
	g. Instrumental Prelude Musician.....	16
	h. Worship Team Leader	17
	i. Worship Team Instrumentalist.....	18
	j. Chorale Accompanist	19
	k. Chorale Representative	20
	l. Worship Team Representative.....	21
	m. Band Representative.....	22
	n. Technical Team Director.....	23
	o. Children’s Music Director	24
8.	Appendix	25
	a. Definition of a Worship Leader	26
	b. Implications from Leviticus 8-9	28
	c. The Attitude of a Doorkeeper	29
	d. “What is the Philosophy of Worship that Unites Us?” by John Piper	30
	e. Ladies’ Clothing Checklist.....	31
	f. Worship Ministry Application.....	32

Ministry Philosophy

NewSong Fellowship Church Mission Statement:

“To be a Biblical community of God’s servants going into all the world reaching the unbelieving, the unchurched, the unconnected, and nurturing each other to become reproducing Christ followers.”

Reproducing Christ followers are people of WISDOM:

- Worship,
 - Cultivating a heart of worship in order to express God-honoring, Christ-exalting prayer and praise, both corporately and individually, in celebration and reflective communion.
- Instruction,
 - Being convinced that spiritual transformation occurs through diligent application of God’s Word and committing to a lifetime of learning the Scriptures.
- Stewardship,
 - Being a manager of God-given resources and using these resources for Kingdom-building purposes
- Discipleship,
 - Modeling the life, the love and the Lordship of Christ to another believer and helping them to reproduce that life change in their lives.
- Outreach, &
 - Prayerfully and purposefully looking for ways to cultivate, proclaim, and reap the Gospel in unbelievers’ lives, both locally and globally.
- Meaningful fellowship.
 - Participating in Biblical community and mutually caring for those in the Body

The Worship Ministry is an important part of this mission, especially the “W” in WISDOM. We seek to participate in & advance this mission by:

Identifying and cultivating worship leaders who plan & prepare to facilitate the corporate celebration of God's people in His presence.

Why “Ascend”?

Facilitating the corporate celebration of God’s people in His presence is at the heart of our purpose as a ministry. In order to fulfill this purpose, we must constantly seek to know God for who He is and understand our role and responsibilities in light of His character and ours.

His character is one of holiness: He dwells in unapproachable light, is completely unstained by any imperfection or impurity, and is high and lifted up above every created being in how He thinks, speaks, and acts. We, however, are sinful by nature: we tend toward darkness, perform “good” works that are like filthy rags, and continually fall short of the standard of holiness.

So God is highly exalted & we are lowly. This is why we “ascend” to Him when we worship. We are reaching up; He is looking down.

This is beautifully pictured in Psalms 120-134, all of which are subtitled “A Psalm of Ascents.” These Psalms would be sung by the Jews as they approached the temple in Jerusalem, which sat on top of a hill. In their experience, they ascended to meet with God. We don’t have to physically climb a hill to meet with God, but we must metaphorically ascend in worship in order to rise above our earthly circumstances.

Another picture of ascending is given in Psalm 24. In verses 3-4, David says: “Who may ascend into the hill of the LORD? And who may stand in His holy place? He who has clean hands and a pure heart, who has not lifted up his soul to falsehood and has not sworn deceitfully.” A moral ascension must take place in order for us to worship. We must come to God with clean hands and a pure heart. We must confess our sins to Him. We must have right relationships characterized by honesty and integrity. If these things are not present, we have no right to think our worship is acceptable.

So why do we call our worship ministry “Ascend”? First, because we are more than a music ministry. We are a ministry that encourages and expects godly character from its members because without it, we will not ascend into the hill of the Lord. Godly character enables worship. Second, because there is cause for great corporate (and individual) celebration in the character of our God and in the amazing grace and mercy He extends by allowing such lowly people as us to relate to and worship Him. As we look to Him, we are taken to a higher place: we Ascend.

Teams

There are 5 teams of “worship leaders:”

1. Worship Team
 - a. These teams are the core groups that lead NewSong’s congregational singing each Sunday.
 - b. Each worship team is made up of 3 groups of people: vocal, instrumental, and technical.
 - c. Worship teams are scheduled about one Sunday a month, which includes two Wednesday night rehearsals and a pre-service sound check.
2. Chorale
 - a. The chorale is our entry-level large group choir.
 - b. Made up of all worship team singers plus anyone else from the congregation who is interested.
 - c. Sings mostly for special occasions and rehearses weekly on Wednesday nights.
3. Special Musicians
 - a. These people lead worship by performing non-congregational music during NewSong’s worship services and events.
 - b. Made up of those who have advanced musical ability and have been invited to perform.
 - c. Scheduled approximately once every 3 months.
4. Worship Ministry Leadership Team
 - a. A team of designated representatives from each of the previous teams who meet to discuss, plan, and communicate important events to the rest of the Worship Ministry.
 - b. Made up of a Chorale rep, Worship Team rep, Technical team director, band rep, administrative rep, and the Director of Worship & Arts.
 - c. This team will meet approximately once a quarter.
5. Additional Teams
 - a. Administrative
 - b. HUG (Hosts, Ushers, & Greeters)
 - c. Communion
 - d. Baptism
 - e. Tape Ministry
 - f. Special Events

Pathway to Worship Ministry Involvement

There are occasions when the pathway must be adjusted. This may occur at the Pastor of Worship & Arts' discretion.

Chorale Singer:

1. Open to anyone on their way toward associate membership.
2. Come to Chorale rehearsals for each event in which you wish to participate.

Worship Team Singer:

1. Open to Chorale singers who are associate members.
2. Join Chorale and faithfully participate for 1 or 2 events.
3. Read pertinent sections of Worship Ministry Manual & submit application.
4. Audition/interview with Pastor of Worship & Arts.
5. Pastor of Worship & Arts will determine placement based on character/commitment/competency.

Special Music Singer:

1. Open to Current or Former Worship Team Singers who are associate members.
2. Join Worship Team & faithfully participate over approximately 3 month period of time.
3. Wait for invitation from Pastor of Worship & Arts.

Worship Team Instrumentalist:

1. Open to any instrumentalist who is an associate member.
2. Contact Pastor of Worship & Arts regarding your interest.
3. Read pertinent sections of Worship Ministry Manual & submit application.
4. Audition/interview with Pastor of Worship & Arts.
5. Pastor of Worship & Arts will determine placement based on character/commitment/competency.

Sound/Computer-Lighting/Camera Technician:

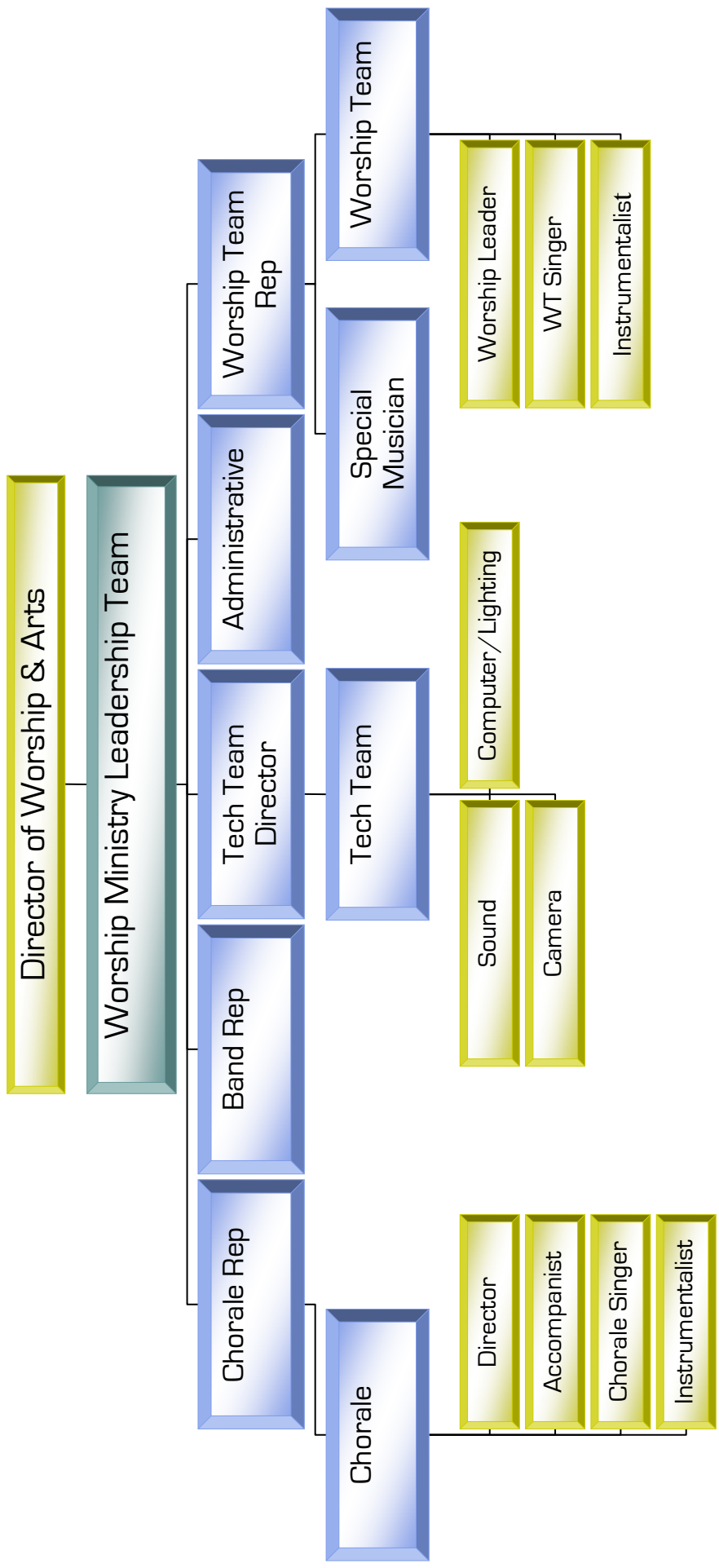
1. Open to any associate member.
2. Contact Pastor of Worship & Arts regarding your interest.
3. Read pertinent sections of Worship Ministry Manual & submit application.
4. Train/interview with Pastor of Worship & Arts.
5. Pastor of Worship & Arts will determine placement based on character/commitment/competency.

General Expectations

Each person involved on any team is expected to display the following:

1. Commitment
 - a. To Christ
 - i. Born-again
 - ii. Baptised
 - b. To NewSong
 - i. On the road to Associate Member
 - ii. Not under church discipline
 - iii. Faithful Small Group attendance
 - iv. Faithful Sunday AM attendance
 - When you are on the schedule for a Sunday morning, you should plan to stay for the entirety of both services. Leaving the second service early is strongly discouraged.
 - c. To Worship Ministry (WM)
 - i. Be on-time for all scheduled responsibilities (To be on-time is to be late, to be early is to be on-time.)
 - ii. Pray for God to be glorified through WM events and in WM individuals' lives
2. Godly Character
 - Person of WISDOM (see above)
3. Competency
 - a. talent is essential to be part of specialized teams, i.e. worship teams, special music, instrumental
 - b. talent can be cultivated via participation in chorale & tech training
4. Appropriate Conduct
 - a. Dress (Ladies, see modesty guidelines)
 - i. The expectation is that people on stage would dress at least one step above the average NewSong attender.
 1. Guys, this means dress slacks & socks, a collared shirt, nice sweater, or button down shirt.
 2. Ladies, this means nice shoes, pants, blouses, skirts, & dresses.
 - ii. No jeans, sneakers, flip flops, white socks, or hats.
 - iii. Also, please remember that excessive amounts of cologne or perfume may cause others to suffer.
 - b. Teamwork
 - c. Respect others
 - d. Positive attitude

Worship Ministry Organizational Chart



Job Descriptions

Sound Technician

Purpose: To provide sound support for corporate NewSong gatherings and worship team rehearsals so as to attain an ideal atmosphere for the communication of God's Word.

Requirements:

- See General Expectations.

Responsibilities:

1. Record the message every Sunday.
2. Provide sound support for all scheduled worship team rehearsals (normally every Sunday morning & the preceding Wednesday night) and services.
3. Arrive early to make sure batteries are changed, mics are checked, and system is on so the worship team can begin their rehearsal promptly.
4. Power off & secure sound system when services and rehearsals are completed.

Expectations:

1. Attend all ministry community meetings.
2. Attend training sessions.
3. Find a replacement if you are unable to **completely** fulfill any responsibility. Please do not find someone to fill in for a rehearsal without asking them to also run the service unless your conflict is a last minute emergency.

Computer/Lighting Technician

Purpose: To provide computer and lighting support for corporate NewSong gatherings so as to attain an ideal atmosphere for the communication of God's Word.

Requirements:

- See General Expectations.

Responsibilities:

1. Adjust lighting scenes according to the Sunday morning Order of Worship.
2. Run EasyWorship software to project lyrics & Bible verses on screens during Sunday morning services and rehearsals.
3. Power off projectors, stage TV's, sound booth computer, and stage lights when services are completed.

Expectations:

1. Attend all ministry community meetings.
2. Attend training sessions.
3. Find a replacement if you are unable to *completely* fulfill any responsibility.

Camera Technician

Purpose: To provide camera support for corporate NewSong gatherings so as to attain an ideal atmosphere for the communication of God's Word.

Requirements:

- See General Expectations.

Responsibilities:

1. Arrive approximately 30 minutes before Sunday morning services to make sure camera is on and working properly.
2. Man the camera during services.

Expectations:

1. Attend all ministry community meetings.
2. Attend training sessions.
3. Find a replacement if you are unable to *completely* fulfill any responsibility.

Chorale Singer

Purpose: To vocally lead NewSong worship services through congregational singing and special music.

Requirements:

- See General Expectations.

Responsibilities:

1. Attend chorale rehearsals.
2. Participate in the designated chorale event for which you've been rehearsing.
3. Return chorale music folder when finished.

Expectations:

- Attend all ministry community meetings.

Worship Team Singer

Purpose: To vocally lead NewSong worship services through congregational singing.

Requirements:

1. See General Expectations. PLUS...
2. Demonstrate sustained commitment to the chorale.
3. Demonstrate above average vocal ability.
4. Associate Member moving towards Participating Membership.

Responsibilities:

1. Fulfill Chorale Singer job description.
2. Attend all scheduled worship team rehearsals (usually Sunday morning & 2 preceding Wednesdays).
3. Participate in Sunday morning services for which your worship team is scheduled.

Expectations:

1. Attend all ministry community meetings.
2. Attend training sessions.
3. Find a replacement if you are unable to *completely* fulfill any responsibility. If you cannot attend a Wednesday night rehearsal, you may call the Dir. Of Worship to make up the missed rehearsal. Otherwise you must find a replacement before the first rehearsal.

Special Musician

Purpose: To vocally or instrumentally lead NewSong worship services through special music.

Requirements:

1. See General Expectations. PLUS...
2. Demonstrate advanced vocal or instrumental ability.
3. Associate Member moving towards Participating Membership.

Responsibilities:

1. Choose a solo piece according to the theme or Scripture passage of the given service.
2. Organize & rehearse with supplemental musicians without conflicting with normally scheduled rehearsals. Sunday morning sound check should not be the first time you rehearse together.
3. Arrive for sound check about 40 minutes before service time unless otherwise notified.

Expectations:

1. Attend all ministry community meetings.
2. Sing when scheduled (approx. once every 3 months).
3. Find a replacement if you are unable to *completely* fulfill any responsibility.

Instrumental Prelude Musician

Purpose: To provide instrumental pre-service music for NewSong worship services.

Requirements:

1. See General Expectations. PLUS...
2. Demonstrate instrumental proficiency.
3. Consistent NewSong attender.

Responsibilities:

1. Choose & prepare an instrumental piece.
2. Organize & rehearse with supplemental musicians without conflicting with normally scheduled rehearsals. Sunday morning sound check should not be the first time you rehearse together.
3. Schedule a time at least a week before your scheduled date to perform your piece for the Pastor of Worship.
4. Arrive for sound check about 30 minutes before service time unless otherwise notified. You will NOT have time for a **full run-through** of your piece. Please be prepared beforehand.

Expectations:

1. Perform when scheduled (approx. twice every 3 months).
2. Find a replacement and notify Pastor of Worship if you are unable to ***completely*** fulfill any responsibility.

Worship Team Leader

Purpose: To plan, prepare worship teams for, and lead NewSong's corporate worship celebrations.

Requirements:

1. See General Expectations. PLUS...
2. Demonstrate sustained commitment to the Worship Ministry.
3. Demonstrate above average vocal ability.
4. Associate Member moving towards Participating Membership.
5. Godly life and family (1 Tim. 3:1-13)
6. Passion for the Gospel (1 Cor. 15:3-4)
7. Grasp of practical and biblical theology (2 Tim. 3:16-17)
8. Pastoral leadership gifting
9. The Attitude of a Doorkeeper – Psalm 84:10

Responsibilities:

1. Fulfill Worship Team Singer or Worship Team Instrumentalist job description.
2. Prayerfully plan, prepare for, and conduct scheduled worship team rehearsals (usually Sunday morning & 2 preceding Wednesdays).
3. Lead Sunday morning services for which you are is scheduled.

Expectations:

1. Meet quarterly with Director of Worship & Arts.
2. Attend all ministry community meetings.
3. Attend training sessions.
4. Contact the Director of Worship & Arts at least one month in advance if you are unable to *completely* fulfill any responsibility.

Worship Team Instrumentalist

(Bass, Drums, Piano, Guitar)

Purpose: To instrumentally lead NewSong worship services through congregational singing and special music.

Requirements:

1. See General Expectations. PLUS...
2. Demonstrate above average instrumental ability.

Responsibilities:

1. Attend all scheduled worship team rehearsals (usually Sunday morning & the preceding Wednesday).
2. Participate in Sunday morning services for which your worship team is scheduled.

Expectations:

1. Attend all ministry community meetings.
2. Attend training sessions.
3. Find a replacement if you are unable to *completely* fulfill any responsibility. If you cannot attend the Wednesday night rehearsal, you may call the Director of Worship & Arts to make up the missed rehearsal. Otherwise you must find a replacement before the rehearsal.

Chorale Accompanist

Purpose: To provide piano accompaniment for the chorale, particularly for rehearsals.

Requirements:

1. See General Expectations. PLUS...
2. Demonstrate above average piano & sight-reading ability.

Responsibilities:

- Attend all scheduled chorale rehearsals.

Expectations:

1. Attend all ministry community meetings.
2. Attend training sessions.
3. Find a replacement for each rehearsal that you miss. Communicate this to the Chorale Director.

Chorale Representative

Purpose: To speak on behalf of the Chorale to the Worship Ministry Leadership Team.

Requirements:

1. See General Expectations. PLUS..
2. Demonstrate solid commitment to the Chorale.
3. Demonstrate strong relationships with other Chorale members.

Responsibilities:

1. Facilitate communication to the Chorale.
2. Help in planning training & fellowship events.

Expectations:

- Meet quarterly with Worship Ministry Leadership Team.

Worship Team Representative

Purpose: To speak on behalf of Worship Team Singers to the Worship Ministry Leadership Team.

Requirements:

1. See General Expectations. PLUS...
2. Demonstrate solid commitment to the Chorale and Worship Team.
3. Demonstrate strong relationships with other Worship Team Singers.

Responsibilities:

1. Facilitate communication to Worship Team Singers.
2. Help in planning training & fellowship events.

Expectations:

- Meet quarterly with Worship Ministry Leadership Team.

Band Representative

Purpose: To speak on behalf of Worship Team Instrumentalists to the Worship Ministry Leadership Team.

Requirements:

1. See General Expectations. PLUS...
2. Demonstrate solid commitment to the Worship Team.
3. Demonstrate strong relationships with other Band members.

Responsibilities:

1. Facilitate communication to the Band.
2. Help in planning training & fellowship events.

Expectations:

- Meet quarterly with Worship Ministry Leadership Team.

Technical Team Director

Purpose: To speak on behalf of the Technical Team to the Worship Ministry Leadership Team.

Requirements:

1. See General Expectations. PLUS..
2. Demonstrate solid commitment to the Technical Team.
3. Demonstrate above average technical ability.

Responsibilities:

1. Facilitate communication to the Technical Team.
2. Help in planning training & fellowship events.

Expectations:

- Meet quarterly with Worship Ministry Leadership Team.

Children's Music Director

Purpose: To organize and direct all music involving children at NewSong.

Requirements:

1. See General Expectations. PLUS...
2. Demonstrate above average musical ability.

Responsibilities:

1. Plan Children's music events.
2. Coordinate & communicate with parents, Children's Ministry Director(s) and Worship Ministry Director regarding rehearsals & performances.

Expectations:

- TBD per event.

Appendix

Practical & theological articles that are helpful for
understanding the ministry

Definition of a Worship Leader

An effective worship leader,

- Not a song leader
- Not a performer
 - Worship vs. Performance

Worship is the exalting of God and the humbling or decreasing of myself. To lead others in a corporate song means that I lead them to exalt God and lay themselves aside. I help them rise past me, the worship team and even the song and meet with God himself. My problem is this: the world has taught me to strive to be loved by doing things or performing so people like me. This doesn't fit the true meaning of leading worship. If I were leading worship from a desire of people liking me, I am not decreasing, I am increasing and even more I am not exalting God, I am performing.

Performance draws attention to yourself. Worship draws attention to God. A performer shines a spotlight on their own skills and capabilities. A worshipper draws attention to God's beautiful attributes. I am not saying performers and performances are wrong. I am saying that you cannot perform a worship song.

I have learned to battle this some in my heart and mind by realizing I am accepted, I am the beloved of God, and He is in love with me. He is the one I want people to worship, the one who has set me free and is in love with me. As you lead worship, lead from the truth that you are the beloved, and then lead people to decrease, and exalt God.

Lord, help us desire you getting your glory as much as you desire to get your glory. –
Charlie Hall

aided and led by the Holy Spirit,

- Philippians 3:3 – for we are the true circumcision, who worship in the Spirit of God and glory in Christ Jesus and put no confidence in the flesh,

skillfully

- Psalm 33:3
 - Sing to Him a new song;
 - Play skillfully with a shout of joy.
- Pursuing greater musical proficiency
 - Understanding theory & reading music
 - Playing/singing by ear & spontaneously

combines biblical truth with music

- Colossians 3:16
 - Let the word of Christ richly dwell within you,** with all wisdom teaching and admonishing one another **with psalms and hymns and spiritual songs, singing** with thankfulness in your hearts to God.
- growing in Biblical knowledge & doctrine
- Balance objective truth with subjective response
- Lyrics must be BIBLICAL!

to magnify the worth of God and the redemptive work of Jesus Christ,

- Focus on God's character
- Focus on Christ & redemptive work

thereby motivating the gathered church

- Don't demand response
- Don't manipulate response
- Don't shame into response

to join him in proclaiming and cherishing the truth about God

- Psalm 34:1-3
I will bless the LORD at all times;
His praise shall continually be in my mouth.
My soul will make its boast in the LORD;
The humble will hear it and rejoice.
O magnify the LORD with me,
And let us exalt His name together.
- Proclaim
 - more than just a worship experience
 - remind ourselves of God's greatness, his accomplishments, his promises
- Cherish
 - Not just aware but amazed
 - Not just learning but loving

and seeking to live all of life for the glory of God.

- Romans 12:1
Therefore I urge you, brethren, by the mercies of God, to present your bodies a living and holy sacrifice, acceptable to God, which is your spiritual service of worship.
- The "Call To Worship": There can only be one call to worship, and this comes at conversion, when in complete repentance we admit to worshipping falsely, trapped by the inversion and enslaved to false gods before whom we have been dying sacrifices. This call to true worship comes but once, not every Sunday, in spite of the repeated calls to worship that begin most liturgies and orders of worship. These should not be labeled calls to worship but call to continuation of worship. We do not go to church to worship, but, already at worship, we join our brothers and sisters in continuing those actions that should have been going on – privately, [as families], or even corporately – all week long. [Music Through the Eyes of Faith, p 147]
– Bob Kauflin

Implications from Leviticus 8-9

- A. **The Calling** (1-2) – We should each have a God-given desire to serve Him through worship and music.
- B. **The Confirmation** (3-5) – We should welcome the process of having the church confirm our ministry in worship.
- C. **The Cleansing** (6) – We should each look at our relationship with Christ and make sure we are clean before Him.
- D. **The Clothing** (7-9, 13) – We should look to appear before the Lord and His people in an honoring and non-distractive way.
- E. **The Consecrating** (10-12) – We must seek to please the Lord and not men through our service in worship.
- F. **The Careful Preparation** (entire passage) – We should diligently get ready each time we plan to facilitate God's people in worship.
- G. **The Confines** – We must recognize that our flesh is weak and we will fall short if we try to serve in worship without properly being built up in the inner man.
- H. **The Commitment** (32) – We can expect that leading in worship will be costly to us personally.
- I. **The Compliance** (36) – We will be fruitful only when we completely surrender to the Lord's will.
- J. **The Conclusion** (9:23) – We will usher people into the presence and the Glory of God in our service.

The Attitude of a Doorkeeper – Psalm 84:10

1. The gate was the furthest extremity of the temple – A Position of Humility
2. The doorkeeper has only the faintest glimpse of the temple glories, hears the least of its music, tastes little of its delicacies; yet the Psalmist is more content on the doorstep than dwelling in tents of wickedness – speaks of true humility... Isaiah 66:2 “This is the one I esteem: he who is humble and contrite in spirit, and trembles at my word.”
3. Practically what does this look like if you’re serving on a worship team?
 - a. One who is humble...
 - i. Recognizes and trusts God’s character (Psalm 119:66)
 - ii. Focuses on Christ (Hebrews 12:1-2)
 - iii. Is overwhelmed with God’s undeserved grace and goodness (Psalm 116:12-19)
 - iv. Thankful and grateful towards others (1 Thess. 5:18)
 - v. Gentle and patient (Colossians 3:12-14)
 - vi. Has an accurate view of their gifts and abilities (Romans 12:3)
 - vii. Is a good listener (James 1:19)
 - viii. Is gladly submissive and obedient to those in authority (Romans 12:1-2)
 - ix. Is thankful for criticism or reproof (Proverbs 9:8)
 - x. Has a teachable spirit (Proverbs 9:9)
 - xi. Finds joy in serving (Galatians 5:13)
 - xii. Repenting of sin is a way of life (1 Timothy 4:7-9)
 - b. One who is proud...
 - i. Complains against or passes judgment on God (Romans 9:20)
 - ii. Ungrateful (2 Chronicles 32:25)
 - iii. Angry (Matt. 20:1-16)
 - iv. Sees themselves better than others (Luke 7:36-50)
 - v. Has an inflated view of their gifts and abilities (1 Corinthians 4:7)
 - c. Or the opposite
 - i. Focuses on the lack of your gifts and abilities (1 Corinthians 12:14-25)
 - ii. Perfectionist (Matt. 23:24-28)
 - iii. Talks too much (Proverbs 10:19)
 - iv. Talks too much about yourself (Proverbs 27:2)
 - v. Seeks independence or control (Ephesians 5:21)
 - vi. Is devastated by criticism (Proverbs 13:1)
 - vii. Is unteachable (Proverbs 19:20)
 - viii. Minimizes their own sin (Matt. 7:3-5)
 - ix. Maximizes others sin (Luke 18:9-14)
 - x. Is impatient and irritable with others (Ephesians 4:31-32)
 - xi. Is jealous or envious (1 Corinthians 13:4)

What is the Philosophy of Worship that Unites Us?

Bethlehem Baptist Church

April 1994

1. God-centeredness: A high priority of the vertical focus of our Sunday morning service. The ultimate aim is to so experience God that he is glorified in our affections.
2. Expecting the powerful presence of God: We do not just direct ourselves toward him. We earnestly seek his drawing near according to the promise of James 4:8. We believe that in worship God draws near to us in power, and makes himself known and felt for our good and for the salvation of unbelievers in the midst.
3. Bible based and Bible saturated: The content of our singing and praying and welcoming and preaching and poetry will always conform to the truth of Scripture. The content of God's Word will be woven through all we do in worship and will be the ground of all our appeal to authority.
4. Head and heart: Worship that aims at kindling and carrying deep, strong, real emotions toward God, but does not manipulate people's emotions by failing to appeal to clear thinking about spiritual things based on shareable evidences outside ourselves.
5. Earnestness and intensity: Avoiding a trite, flippant, superficial, frivolous atmosphere, but instead setting an example of reverence and passion and wonder.
6. Authentic communication: The utter renunciation of all sham and deceit and hypocrisy and pretense and affectation and posturing. Not the atmosphere of artistic or oratorical performance but the atmosphere of a radically personal encounter with God truth..
7. The manifestation of God and the common good: We expect and hope and pray (according to 1 Cor. 12:7) that our focus on the manifesting of God is good for people and that therefore a spirit of love for each other is not incompatible with, but necessary to authentic worship.
8. Undistracting excellence: We will try to sing and play and pray and preach in such a way that people's attention will not be diverted from the substance by shoddy ministry nor by excessive finesse, elegance or refinement. Natural, undistracting excellence will let the truth and beauty of God shine through.
9. The mingling of historic and contemporary music: And he said to them, "Therefore every scribe who has been trained for the kingdom of heaven is like a householder who brings out of his treasure what is new and what is old" (Matt. 13:52)

©Desiring God

Permissions: You are permitted and encouraged to reproduce and distribute this material in any format provided that you do not alter the wording in any way, you do not charge a fee beyond the cost of reproduction, and you do not make more than 1,000 physical copies. For web posting, a link to this document on our website is preferred. Any exceptions to the above must be explicitly approved by Desiring God.

Please include the following statement on any distributed copy: By John Piper. ©Desiring God. Website: www.desiringGod.org. Email: mail@desiringGod.org. Toll Free: 888.346.4700.

Ladies' Modesty Checklist

What are some things ladies should look for as they stand in front of a mirror?

- When I am wearing a loose-fitting blouse or scoop-neck, can I see anything when I lean over? If so, I need to remember to place my hand against my neckline when I bend down.
- If I am wearing a button-down top, I need to turn sideways and move around to see if there are any gaping holes that expose my chest. If there are, I've got to grab the sewing box and pin between the buttons.
- The same check is needed if I am wearing sleeveless. When I move around can I see my bra? If I do, I need the pins again!
- Am I wearing a spaghetti-strap, halter-top or see-through blouse? Not even pins will fix this problem! Most guys find these very unhelpful. It's time to go back to the closet.
- Can I see the lace or seam of my bra through my shirt? In this case, seamless bras are a better option.
- One final shirt check: Does it reveal any part of my cleavage? Does my midriff show when I raise my hands above my head? Is my shirt just plain too tight? If the answer is "yes" to any one of these questions, then I need to change my outfit.
- Does my midriff (or underwear) show when I bend over or lift my hands? If so, is it because my skirt or my pants are too low? Either my shirt needs to be longer or I need to find a skirt or pants that sit higher.
- I also have to turn around to see if what I'm wearing is too tight around my derriere, or if the outline of my underwear shows. If so, I know what I have to do!
- And for my shorts – I can't just check them standing up. I need to see how much they reveal when I sit down. If I see too much leg, I need a longer pair.
- The "sit-down" check applies to my skirt or dress as well. And I must remember to keep my skirt pulled down and my knees together when I'm seated.
- And speaking of skirts, watch out for those slits! Does it reveal too much when I walk? Pins are also helpful here.
- Before I leave, I need to give my skirt a "sunlight check." Is it see-through? If so, I need a slip.
- Finally, I must remember to do this modesty check with my shoes on. High-heels make my dress or skirt appear shorter.

Worship Ministry Application

Name _____

Phone Number _____ Birth date _____

Check role desired:

Worship Team Singer

Technical Team

Worship Team Instrumentalist

Other _____

Voice part/Instrument: _____

How long have you been attending NewSong? _____

Associate Member? *(circle one)* Yes No Small Group _____

If no, when do you plan to become an AM? _____

List other NewSong ministries with which you are involved: _____

Please list relevant musical/technical experiences: _____

Are you free on Wednesday nights? _____

What is "worship" to you? _____

Describe your personality: _____

Provide 2 character references:

Name _____

Name _____

Address _____

Address _____

Phone _____

Phone _____

Relationship to applicant _____

Relationship to applicant _____

Do you have any unresolved conflicts in your life? If yes, please explain. _____
